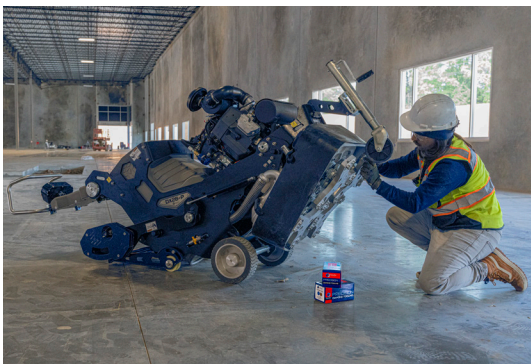




BUSH HAMMER

QUICK REFERENCE INSTALL GUIDE



Diamapro Systems Bush Hammers are aggressive tools used to create a range of desired profiles on concrete, ideal for use on exterior spaces and creating anti-slip surfaces. They are perfect for concrete stripping, cleaning, profiling (CSP 3, 4, and 5), prepping floors for epoxy coatings and overlays, thin coating removal, and even exposing large aggregates.



DT-TP-BUSHHAMMER

QUICK REFERENCE INSTALL GUIDE

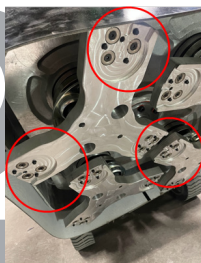
1



Remove the rear bushing on both sides with M6 Hex to allow gearbox room to pitch.

*STEP 1
DX26-P ONLY

2



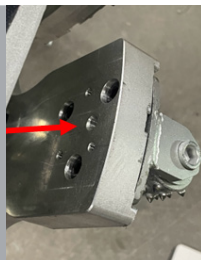
Clean tool plate of any debris around magnets.

3



Attach bush hammers to the plate using the safety pins to correctly line up the bush hammers.

4



Insert bolt with locknut and washer into the top of the tool plate.

5



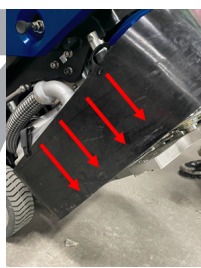
Hand tighten bolt to start threads into bush hammer.

6



Tighten with a M10 wrench to secure bush hammers into the tool plate.

7



Adjust the shroud back to cover the plates.

TOOLING TO FIT ALL GRINDERS



EQUIPMENT



CHEMICALS



470-977-2323

www.diamaprosystems.com

info@diamaprosystems.com