



OWNER'S MANUAL

DX22+E

CONCRETE FLOOR GRINDER



USER & MAINTENANCE BOOK

SAVE THESE INSTRUCTIONS FOR FUTURE REFERENCE



WARRANTY REGISTRATION CARD

Form must be completed and submitted within 30 days from the date of purchase.

Customer Information

First and Last Name

Company Name

Address

City

State

Zip Code

Phone Number

Email

Machine Information

Machine Type

Machine Model

Serial #

Purchase Date (dd/mm/yy)

Diamapro Systems®
3343 Peachtree Road NE
Suite 145 #24
Atlanta, GA 30326

470-977-2323 ■ www.diamaprosystems.com ■ info@diamaprosystems.com

INTRODUCTION

Thank you for purchasing a DIAMAPRO SYSTEMS® product. This manual provides information and procedures to safely operate and maintain the DiamoPro DX22+E. For your own safety and protection from injury, carefully read, understand, and observe the safety instructions described in this manual. Keep this manual or a copy of it with the machine. If you lose this manual or need an additional copy, please contact DiamoPro Systems®. This machine is designed and built with user safety in mind; however, it can present hazards if improperly operated and serviced. Please follow the operating instructions carefully. If there are any questions regarding operating or servicing of this machine, please contact DiamoPro Systems®.

Disclaimer: DiamoPro Systems® and its affiliates take no responsibility for any damage, injury or death resulting from the incorrect or unsafe use of this product. Use of this product should be undertaken by competent persons only. It is the operator's responsibility to ensure that the following safety procedures are followed. If you are unsure, do not operate this product.

1. SAFETY INSTRUCTIONS

1.1 KNOW THE RULES & YOUR EQUIPMENT

Most job sites have rules governing equipment use & maintenance. Before starting at a new work location, check with the supervisor or safety coordinator. Ask about any rules or regulations you need to abide by. OSHA enforces federal laws within the United States that apply to the safe operation, application, & maintenance of equipment on job sites. It is the employer's responsibility to comply with these laws. Do not operate this machine unless you carefully read the operations and maintenance manual.

1.2 RECEIVE PROPER TRAINING

Do not operate this machine unless you have received operational and maintenance training from a DiamoPro Systems® representative or from an authorized distributor for DiamoPro Systems®.

1.3 PROTECT YOUR FEET

Observe all applicable local, state and federal safety regulations. Wear OSHA approved foot protection.

1.4 PROTECT YOUR EYES

Observe all applicable local, state and federal safety regulations. Wear OSHA approved safety glasses.

1.5 PROTECT YOUR LUNGS

Breathable silica may be generated by use of this product. Silica can cause severe and permanent lung damage, cancer, and other serious diseases. Do not breathe the dust. Do not rely on your sight or smell to determine if dust is in the air. Silica may be in the air without a visible dust cloud. If air monitoring equipment for silica is not provided by your employer at your work site, you MUST wear appropriate respiratory protection when using or servicing the machine. Consult your employer and OSHA regarding the appropriate respiratory protection.

1.6 PROTECT YOUR EARS

Observe all applicable local, state and federal safety regulations. Wear OSHA approved hearing protection.

1.7 DRESS PROPERLY

Do not wear loose clothing or jewelry that can be caught in moving parts. Wear protective hair covering to contain long hair. Keep hair away from motor air vent. Rubber gloves and non-skid footwear are recommended when working outdoors.

1.8 AVOID A DANGEROUS ENVIRONMENT

Do not expose machine to rain. Do not use machine in wet conditions. Keep work area well lit. When working at an elevated location, pay attention to articles and persons below.

1.9 BEWARE OF HIDDEN DANGERS IN CONCRETE

Rebar or utility lines may be buried in concrete. Disconnect the power to any utility lines. If these dangers are present are to be missed, clearly mark the area.

1.10 KEEP WORK AREA CLEAN - DO NOT RUN OVER ANYTHING

Loose debris could be thrown from crack. Make sure area to be cut is clear from people and any loose objects, nuts, bolts, etc. Never run over any loose objects.

1.11 KEEP CHILDREN AND VISITORS AWAY

Do not allow anyone to stand in line with the grinding path. Do not let children or visitors in contact with machine or extension cord. Keep children and visitors away from the work area.

1.12 AVOID FLAMMABLE LIQUIDS OR GASES

Diamond Tooling produce heat and sparks during operation. Never use machines in dangerous sites containing flammable, combustible or explosive materials such as lacquer, paint, benzene, thinner, gasoline, gases, and adhesive agents.

1.13 AVOID CONTACT WITH HOT TOOLING AND SHROUD

The Diamond tooling and shroud become hot during operation and remain hot after stopped. Do not touch the tooling and shroud without proper hand protection.

1.14 KEEP FIRM GRIP ON MACHINE

Keep a firm hold on the handle grips and maintain control of the machine until the grinding completely stops.

1.15 CHECK TOOLING FOR CRACKS, DAMAGE, AND MISALIGNMENT

Never use a cracked, damaged, or misaligned tooling. After mounting check to see tooling is secure.

1.16 DO NOT FORCE WRONG SIZE OR TYPE OF TOOLING ONTO MACHINE

Running the wrong type/size of tooling can cause damage to your machine

1.17 USE EQUIPMENT AND ACCESSORIES PROPERLY

Do not force a small grinder to do the job of a heavy-duty grinder. Do not use the walk-behind grinder for improper applications. Never cut material for which the tooling was not designed.

1.18 STORE IDLE EQUIPMENT

The machine and tools should be stored in a dry and secure location when not in use. Keep equipment out of reach of children.

1.19 DO NOT FORCE

The grinder will do the job better and safer at the rate for which it was designed.

1.20 OBTAIN MATERIAL SAFETY DATA SHEET (MSDS) FOR ALL WORK SURFACE MATERIALS

This includes primers, all coatings, adhesives, tile and crack filling materials, etc. Do not attempt to cut, clean out or remove material without MSDS information. Consult MSDS sheet for hazards information. Be aware that some materials are explosive such as dust.

1.21 DO NOT OVERREACH

Always keep proper footing and balance.

1.22 MAINTAIN MACHINE WITH CARE

Keep machine clean and follow maintenance procedures for better and safer performance. Keep handles dry, clean, and free from oil and grease. Follow instructions for lubricating and changing accessories.

1.23 REMOVE ADJUSTING TOOLS

Form a habit of checking to see that tools such as adjusting wrenches are removed from the machine and properly stored before starting.

1.24 STAY ALERT

Watch what you are doing. Use common sense. Do not operate machine when you are tired or fatigued.

1.25 DO NOT USE DRUGS, ALCOHOL, MEDICATION

Do not operate machine while under the influence of drugs, alcohol, or any medication.

1.26 KEEP ALL PARTS IN CORRECT POSITION

Do not operate machine with missing or improperly mounted parts.

1.27 CHECK DAMAGED PARTS

Verify all machine guards are in good condition and will function properly before using the machine. Check for alignment of moving parts, binding of moving parts, breakage of parts, mounting, and any other conditions that may affect machine operation. A guard, power switch or other part that is damaged should be properly repaired or replaced by an authorized service center.

1.28 NEVER TOUCH MOVING PARTS

Never touch moving parts such as blades, belts, and others.

1.29 STOP OPERATION IMMEDIATELY IF ANY ABNORMALITY IS DETECTED

Stop using machine immediately if any abnormalities are observed during operation. Examples of abnormalities include unusual noise and vibration

1.30 WHEN REPLACING A PART, USE THE SAME TYPE AND QUALITY

When replacing a component part with a new one, use only the same type and quality of the previous part. Never attempt to repair a machine if you are unfamiliar with proper procedures and techniques required.

1.31 SAVE THESE INSTRUCTIONS

Refer to this operations and maintenance manual as well as any additional instructions included from other manufacturers.

CALIFORNIA PROP 65 WARNING

Thank you for purchasing a DIAMAPRO SYSTEMS® product. This manual provides information and procedures to safely operate and maintain the DiamoPro DX22+E. For your own safety and protection from injury, carefully read, understand, and observe the safety instructions described in this manual. Keep this manual or a copy of it with the machine. If you lose this manual or need an additional copy, please contact DiamoPro Systems®. This machine is designed and built with user safety in mind; however, it can present hazards if improperly operated and serviced. Please follow the operating instructions carefully. If there are any questions regarding operating or servicing of this machine, please contact DiamoPro Systems®.



THIS PRODUCT CONTAINS LEAD, A CHEMICAL KNOWN TO THE STATE OF CALIFORNIA TO CAUSE BIRTH DEFECTS OR OTHER REPRODUCTIVE HARM.



THIS PRODUCT CONTAINS ONE OR MORE CHEMICALS KNOWN TO THE STATE OF CALIFORNIA TO CAUSE CANCER, BIRTH DEFECTS OR OTHER REPRODUCTIVE HARM.



EXHAUST GASES FROM THIS PRODUCT CONTAIN CHEMICALS KNOWN TO THE STATE OF CALIFORNIA TO CAUSE CANCER, BIRTH DEFECTS OR OTHER REPRODUCTIVE HARM.

DUST WARNING

Cutting, especially when DRY cutting, generates dust that comes from the material being cut, which frequently contains silica.

When dry cutting, be sure to use a HEPA filtered dust collector. Silica is a basic component of sand, quartz, brick clay, granite and numerous other minerals and rocks. Exposure to excessive amount of such dust can cause:

- Respiratory diseases (affecting your ability to breathe), including chronic bronchitis, silicosis and pulmonary fibrosis from exposure to silica. These diseases may be fatal;
- Skin irritation and rash; and
- Cancer according to NTP* and IARC*
*National Toxicology Program, International Agency for Research on Cancer

Take precautionary steps

- Avoid inhalation of and skin contact with dust, mist and fumes;
- Wet cut when feasible, to minimize dust;
- Wear and ensure that all bystanders wear appropriate respiratory protection such as dust masks designed to filter out microscopic particles. (See OSHA 29 CFR Part 1910.1200)

CALIFORNIA PROP 65 WARNING

Use of this product can cause exposure to materials known to the State of California to cause cancer and/or birth defects or other reproductive harm.

CAUTION

- ! **Respirable crystalline silica. May cause cancer. Causes damage to lungs.**
- **Wear respiratory protection during exposure. Use appropriate dust control equipment to keep dust within OSHA and local regulation limits.**



WARNING & ATTENTION

WARNINGS

- It is strictly forbidden to perform wiring work after the machine is connected to electricity
- A leakage protection device must be used for the input power supply.
- Use the national standard six-square three-core cable for wiring, and check whether the insulation of the cable is in good condition
- Before proceeding with the wiring process, make sure the output voltage matches the voltage of the machine.
- The main matching power supply of the standard model is single-phase 220V, and the wiring of the machine is required to be one live wire, one neutral wire, and one ground wire. Wire according to the indication of the power supply connected to the machine.

ATTENTION

- Avoid splashing water on the engine and control box during machine cleaning
- Avoid splashing water on the motor or control box during grinding process
- If the machine does not appear to be operating properly, it should be shut down
- During operation, keep space between the cable and the grinder
- Ensure that the tools are installed in place and securely

2. MAINTENANCE & REPAIR



Before carrying out the maintenance of the DX22+E make sure you understand the contents of this manual. Please contact DiamoPro Systems® for further explanations and information.

- The user shall be required to comply with the qualifications of the relevant personnel:



OPERATOR / ORDINARY MAINTENANCE TECHNICIAN: carries out the tasks necessary for the basic functioning of the machine: execution of the work cycle, implementation of operator commands, other operations closely linked to normal production, any cleaning and inspection operation performed on a daily basis, enforcement of ordinary maintenance operations. Works only with enabled safety functions.



MAINTENANCE TECHNICIAN SPECIALIST (AUTHORIZED DEALER)

Involved in all operating conditions and at all protection levels. Makes extraordinary operations that cannot be run by the user

Maintenance technicians must possess the skills required by this manual, as well as the mental and physical requirements necessary and sufficient to maintain and operate the machine. To ensure the functionality and durability of the machine daily maintenance must be performed, carrying out operations in compliance with the safety requirements.

Only the authorized dealer can make adjustments and operations that are not assigned to the operator. It is forbidden to make adjustments and interventions during machine operation. Before performing any maintenance operation disconnect the machine from the power sources and wait for the cooling of the hot parts (Motor, tool plates, etc.)

Before performing maintenance:

- Thoroughly clean the DX22+E. If in doubt about how to perform occasional repairs, contact our Technical Support or an authorized dealer.
- Upon finishing the job perform a thorough cleaning from processing residues.

2.1 SCHEDULED MAINTENANCE

Good maintenance requires constant and methodical control of all parts of the machine and adaptation of tests to its actual usage. Periodic inspections are crucial to keep the machine efficient and reduce repairs and any resulting dangers.

We recommend that you have your DX22+E serviced by an authorized dealer or a DiamoPro Systems® technician every 500 hours.

Note: frequency is taken over considering a working day of 8 hours.

2.2 ROUTINE & ADDITIONAL MAINTENANCE







Replacement of the motor belt





If, as a result of a visual inspection, it appears that the belts are worn or cracked, replace them, operating as follow:

- Disconnect power source
- Allow motor to cool before replacing belts
- Loosen bolts around water tank & remove water tank
- Loosen bolts on motor mount plate
- Loosen belt tension screw to relieve tension to remove belt
- Remove belt from large gearbox pulley and under the smaller motor pulley
- Install new belt starting with the smaller motor pulley then over the larger gearbox pulley
- Set tension back with tension bolt
- Tighten motor mount plate
- Reinstall water tank and water tank bolts

FREQUENCY	PROCEDURES
FIRST 8 HOURS (BREAK IN PERIOD)	-INSPECT MOTOR BELT -TILT MACHINE BACK & INSPECT GEARBOX SEALS AROUND EACH GRINDING HEAD
EVERY 100 HOURS	-INSPECT MOTOR BELT TENSION
EVERY 250 HOURS	-INSPECT RUBBER IN FLEXIBLE TOOL PLATE MOUNT FOR DAMAGE OR EXCESSIVE WEAR. REPLACE AS NEEDED.
EVERY 500 HOURS	-INSPECT MOTOR BELT & REPLACE IF NEEDED
EVERY 1000 HOURS	-REPLACE GEAR OIL

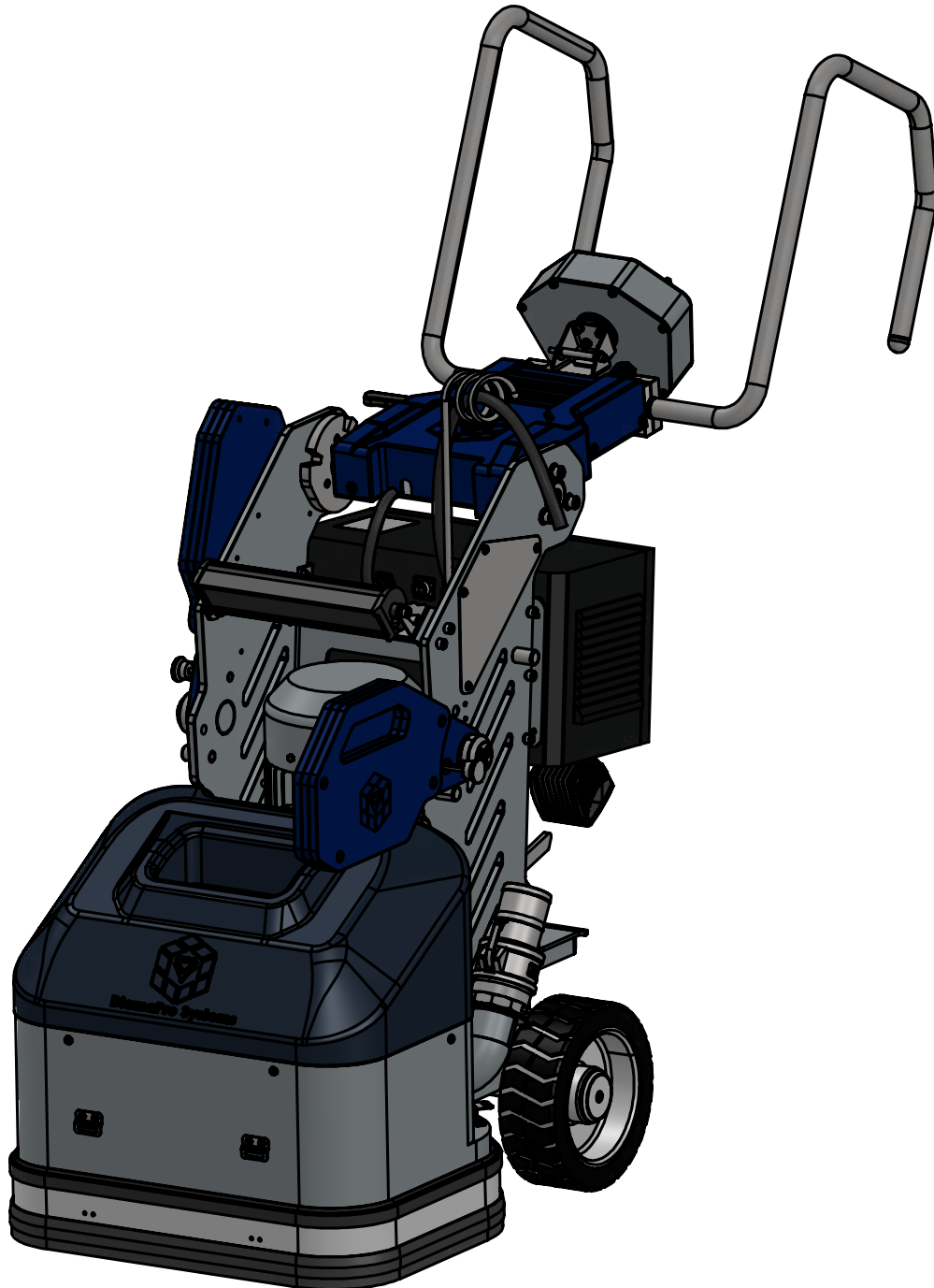
2. MAINTENANCE & REPAIR (cont).

NAME OF OPERATION	FREQUENCY	PERSON IN CHARGE	OPERATING INSTRUCTIONS	STATE OF MACHINE
MECHANICAL PARTS				
General Cleaning	At each start		Wash the dirty parts with a brush and water. Lubricate the parts exposed to dust; Do not lubricate the rubber parts subjected to motion (belts, etc).	Machine stopped /Power sources disconnected
Grinding Heads	At each start		Lift the gearbox grinding head, check whether the abrasive positioning pins are loose or damaged, and replace them if necessary	Machine stopped /Power sources disconnected
Wheels & Wheel Bearings	At each start		Inspect wheels & wheel bearings for damage or excessive wear. Replace if needed.	Machine stopped /Power sources disconnected
Dust Control System	At each start		Inspect dust skirt and dust hoses for damage or excessive wear. Replace if needed.	Machine stopped /Power sources disconnected

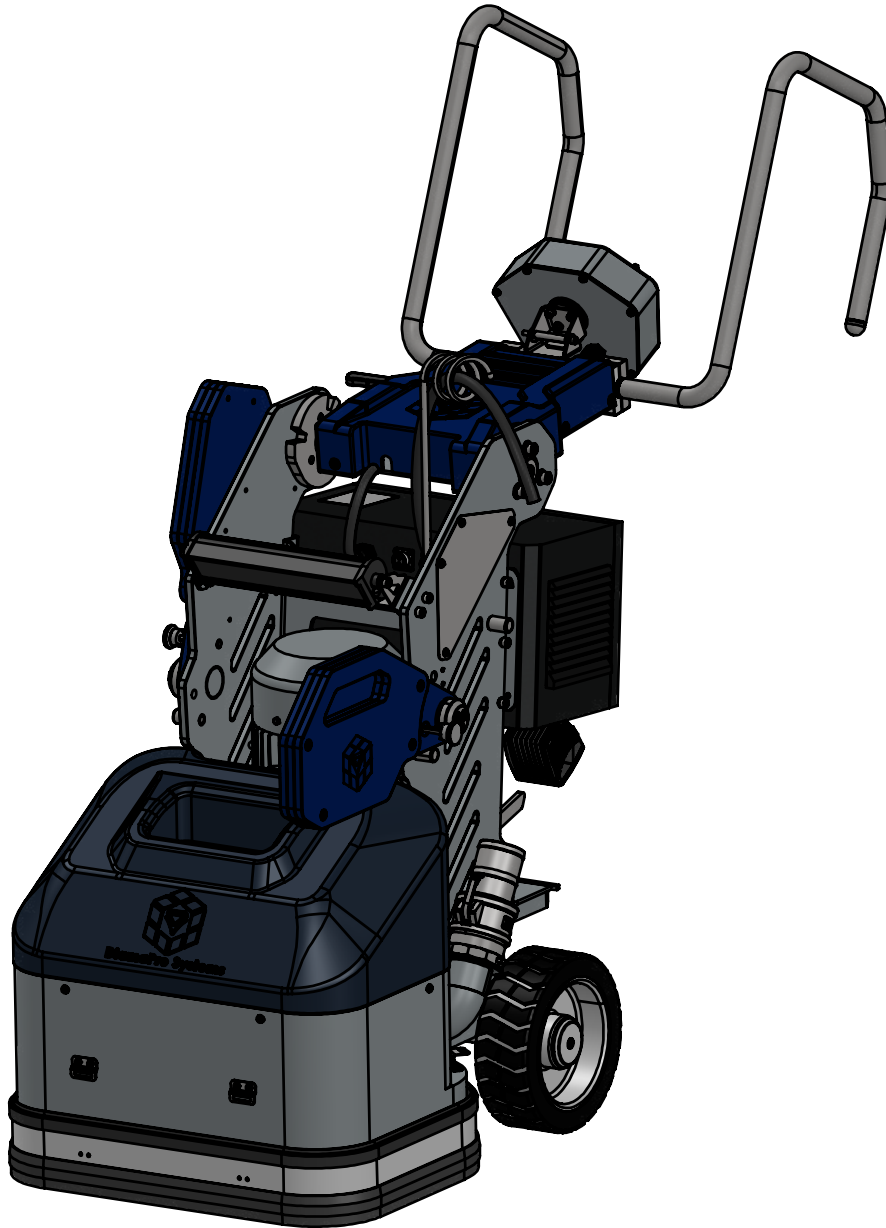
NAME OF OPERATION	FREQUENCY	PERSON IN CHARGE	OPERATING INSTRUCTIONS	STATE OF MACHINE
MECHANICAL PARTS				
Gearbox	Weekly Or every 40 hours		<p>The gearboxes are sealed upon assembly; if you notice oil leaks, carefully find out their origin because there may be leaks from other sources. If the leaks come from the gearbox, contact our technical service or a qualified technician.</p> <p>Clean any oil leaks at the bottom of the grinder. For a possible change of the lubricant due to leaks or for the topping up operations, use the following type of lubricant: MOBIL SCH 630</p> <div style="background-color: #f0f0f0; padding: 10px; border: 1px solid #ccc;"> <p style="text-align: center;">CAUTION</p> <p style="text-align: center;">DO NOT REPLACE THE GEARBOX. CONTACT DIAMAPRO SYSTEMS OR THE AUTHORIZED DEALER.</p> </div>	Machine stopped /Power sources disconnected
Motor Belt	Weekly Or every 40 hours		Check belt for proper tension or abnormal wear. Replace if needed	Machine stopped /Power sources disconnected
SAFETY SYSTEMS				
Safety Systems	Daily		Please note the requirement to perform the checking and recording of verifications of safety components every 6 months.	Machine Stopped
Integrity of Pictograms	Weekly Or every 40 hours			Machine stopped /Power sources disconnected



DX22+E PARTS LIST

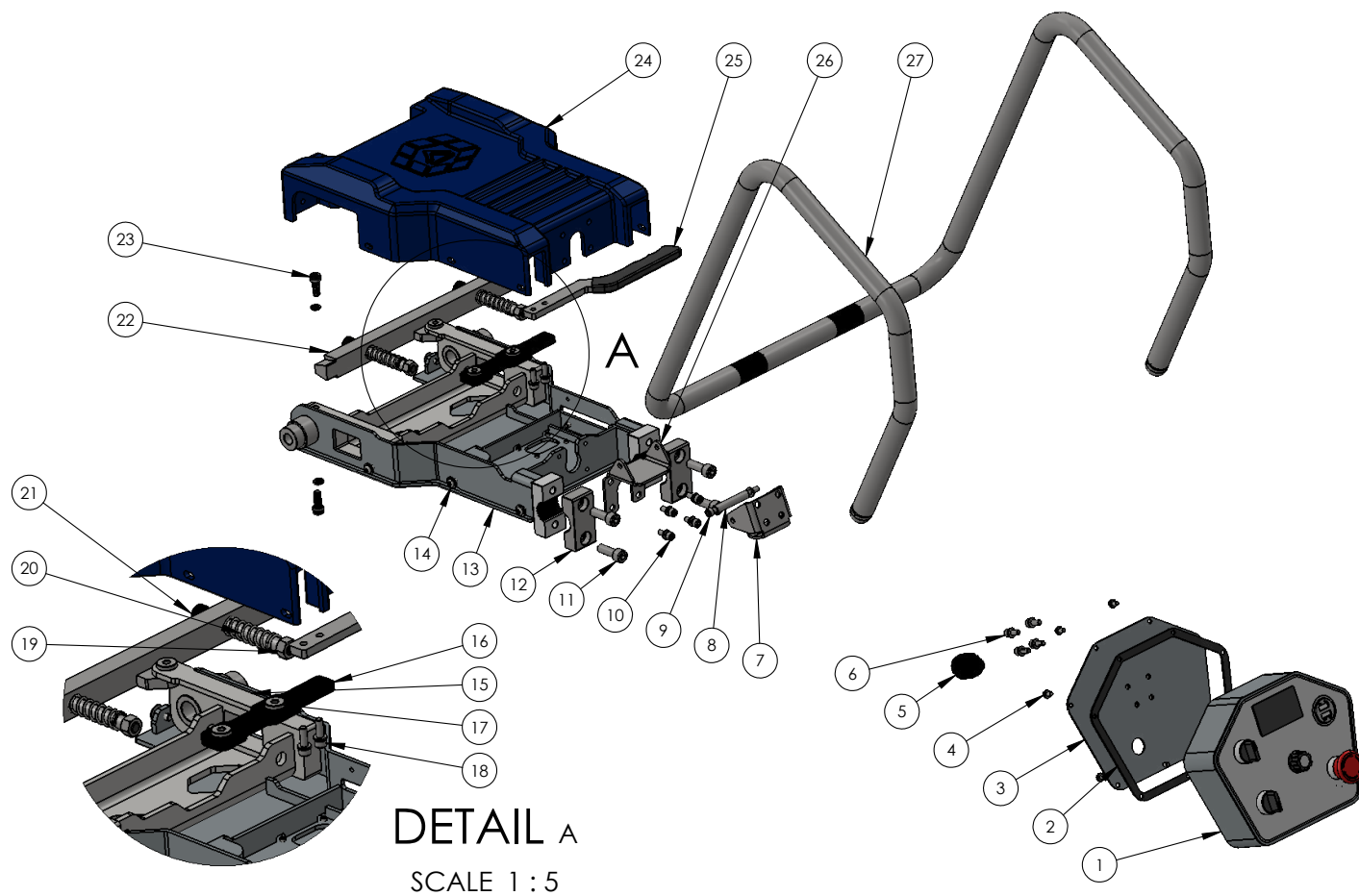


SPECIFICATIONS



DX22+E	ELECTRIC
VOLTAGE	SINGLE PHASE 220V
MOTOR	5.5 HP
INVERTER	7.5 HP
CURRENT	10~15 A
WATER TANK CAPACITY	18 L
WEIGHT	465 LBS
DIMENSIONS (LxWxH)	35x22x42.5 IN
GRINDING PLATE SPEED	0-560 RPM

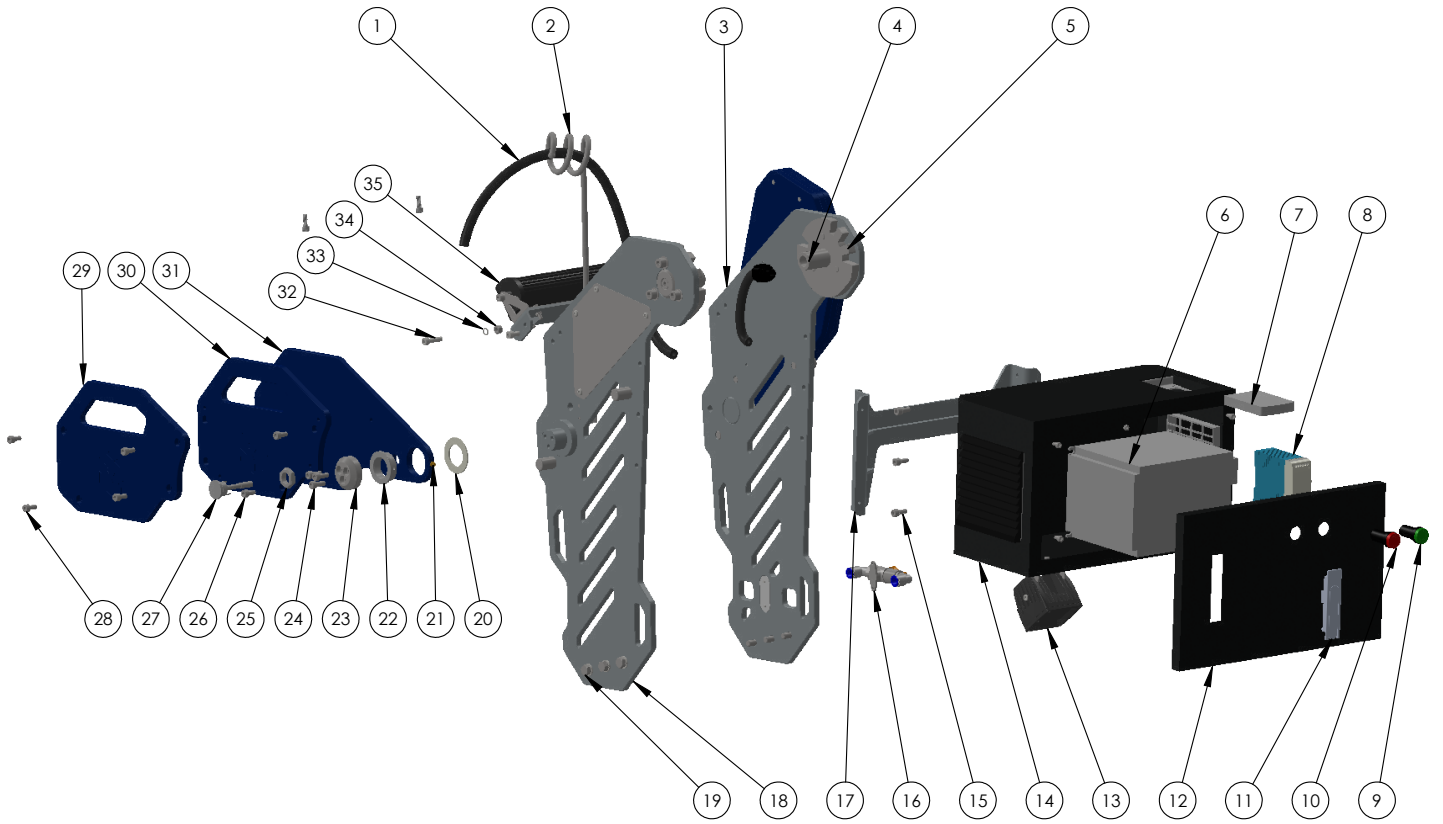
HANDLE ASSEMBLY



HANDLE ASSEMBLY

ITEM NO.	PART NUMBER	DESCRIPTION	QTY.
1	DP-DX22-CPEN	CONTROL PANEL ENCLOSURE	1
2	DP-DX22-CPGS	CONTROL PANEL GASKET	1
3	DP-DX22-CPBP	CONTROL PANEL BACK PLATE	1
4	DP-GH-DX0155	M5X10 HSB ROUNDED	7
5	DP-GH-DX0297	STRAIN RELIEF	1
6	DP-GH-DX0293	M6X16 HSB	4
7	DP-DX-CBBU	CONTROL BOX BASE UPPER	1
8	DP-DX22-CBBS	CONTROL BOX BASE BOLT SLEEVE	1
9	DP-DX22-CBBM6	CONTROL BOX BASE BOLT (M6X60 HSB)	1
10	DP-GH-DX0293	M6x16 HSB	4
11	DP-GH-DX0288	M10x30 HSB	4
12	DP-DX-HBCL	HANDLEBAR UPPER LOCK	2
13	DP-DX22-HAAB	HANDLE ASSEMBLY BASE	1
14	DP-GH-DX0293	M6X16 HSB	8
15	DP-DX22-TRCP	TIE ROD CONNECTING PLATE	1
16	DP-DX22-HNDB	HANDLE BASE	1
17	DP-DX22-HNPS	HANDLE PIN SLEEVE	3
18	DP-GH-DX0275	M6X20 HSB	2
19	DP-GH-A215	M10 NUT	2
20	DP-DX22-COSP	COMPRESS SPRING	2
21	DP-DX-SHBT	M10X95 SHOULDER BOLT	2
22	DP-DX22-HPS	HANDLE POSITIONING SHAFT	1
23	DP-GH-DX0278	M8X20 HSB	4
24	DP-DX22-HNDC	HANDLE HOUSING COVER	1
25	DP-DX22-ADJH	TACTICAL RELOAD LEVER (HANDLE)	1
26	DP-DX22-CBBL	CONTROL BOX BASE LOWER	1
27	DP-DX22-OPHB	HANDLEBAR	1

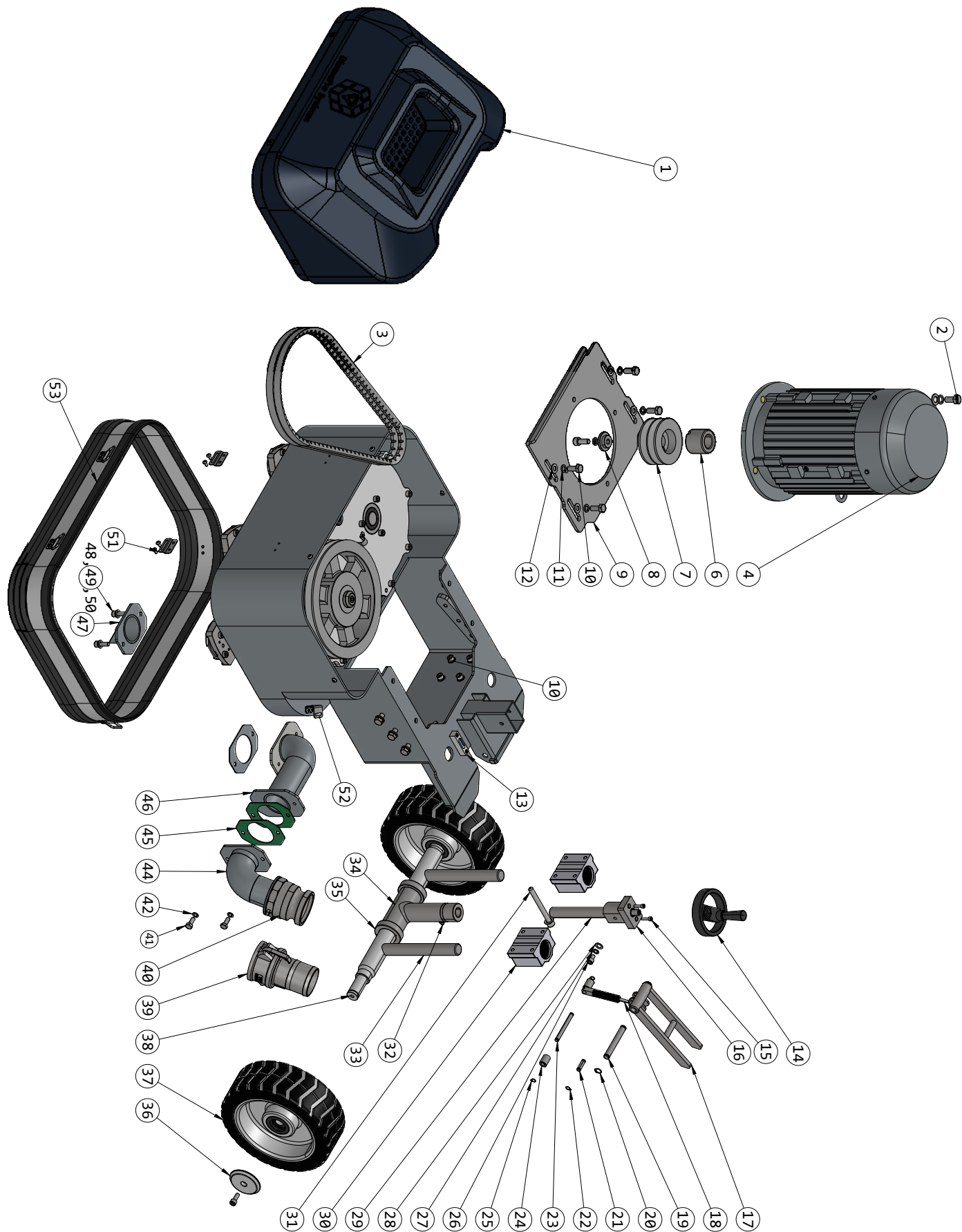
CARRIAGE



CARRIAGE

ITEM NO.	PART NUMBER	DESCRIPTION	QTY.
1	DP-DX22-PIWE	DX22-E+ POWER WIRE	1
2	DP-DX22-WORD	DX22-E+ WIRE ROD	1
3	DP-DX22-LEDL	DX22-E+ LED FRONT WORKING LIGHT	1
4	DP-DX22-RFPT	DX22-E+ REINFORCEMENT PLATE	1
5	DP-DX22-RRSP	DX22-E+ RIGHT FRAME PLATE	1
6	DP-DX22-HSNT	DX22-E+ HANDLE SPLINT	2
7	DP-DX22-SPAT	DX22-E+ SHAFT SPLINT	2
8	DP-DX22-VLSW	DX22-E+ WATER VALVE ASSEMBLY	1
9	DP-DX22-WWIN	DX22-E+ WORK LIGHT	1
10	DP-DX22-PWIN	DX22-E+ POWER LIGHT	1
11	DP-DX22-EBDL	DX22-E+ OPENING LEVER	1
12	DP-DX22-EBDR	DX22-E+ ELECTRICAL PANEL DOOR	1
13	DP-DX22-PWSC	DX22-E+ POWER SWITCH GEAR	1
14	DP-DX22-INVT	DX22-E+ INVERTER	1
15	DP-DX22-LRDT	DX22-E+ LED REAR WORK LIGHT	1
16	DP-DX22-ECEX	DX22-E+ ELECTRICAL BOX	1
17	DP-DX22-EBBR	DX22-E+ SUPORT BRACKET	1
18	DP-GH-DX0278	DX22-E+ M8X20 HSB	6
19	DP-DX22-RLSP	DX22-E+ LEFT FRAME PLATE	1
20	DP-GH-DX0276	DX22-E+ M10X30 OHB	6
21	DP-DX22-NYSP	DX22-E+ NYLON WASHER	2
22	DP-DX22-GFEG	DX22-E+ GREASE FITTING	2
23	DP-DX22-IWA-L	DX22-E+ INNER WEIGHT ARM (LEFT SIDE)	1
24	DP-DX22-WAB	DX22-E+ WEIGHT BEARING	2
25	DP-DX22-WAP	DX22-E+ WEIGHT ARM PLUG	2
26	DP-GH-DX0278	DX22-E+ M8X20 HSB	6
27	DP-GH-WPLN	DX22-E+ WEIGHT PIN LOCKING NUT	2
28	DP-DX22-WLIN	DX22-E+ WEIGHT LOCKING PIN	2
29	DP-GH-DX0287	DX22-E+ M8x16 HSB	8
30	DP-DX22-OW-L	DX22-E+ OUTER WEIGHT (LEFT SIDE)	1
31	DP-GH-DX0287	DX22-E+ M8x16 HSB	8
32	DP-DX22-MW-L	DX22-E+ MIDDLE WEIGHT (LEFT SIDE)	1
33	DP-GH-DX0288	DX22-E+ M10x30 HSB	6
34	DP-DX22-HNSP	DX22-E+ HANDLE SHAFT PLUG	2
35	DP-GH-A159	DX22-E+ M8x30 HSB	8
36	DP-GH-DX0270	DX22-E+ M8 FLAT WASHER	8
37	DP-GH-DX0269	DX22-E+ M8 SPLIT WASHER	4
38	DP-GH-DX0124	DX22-E+ M8 NUT	4

LOWER FRAME ASSEMBLY



LOWER FRAME ASSEMBLY

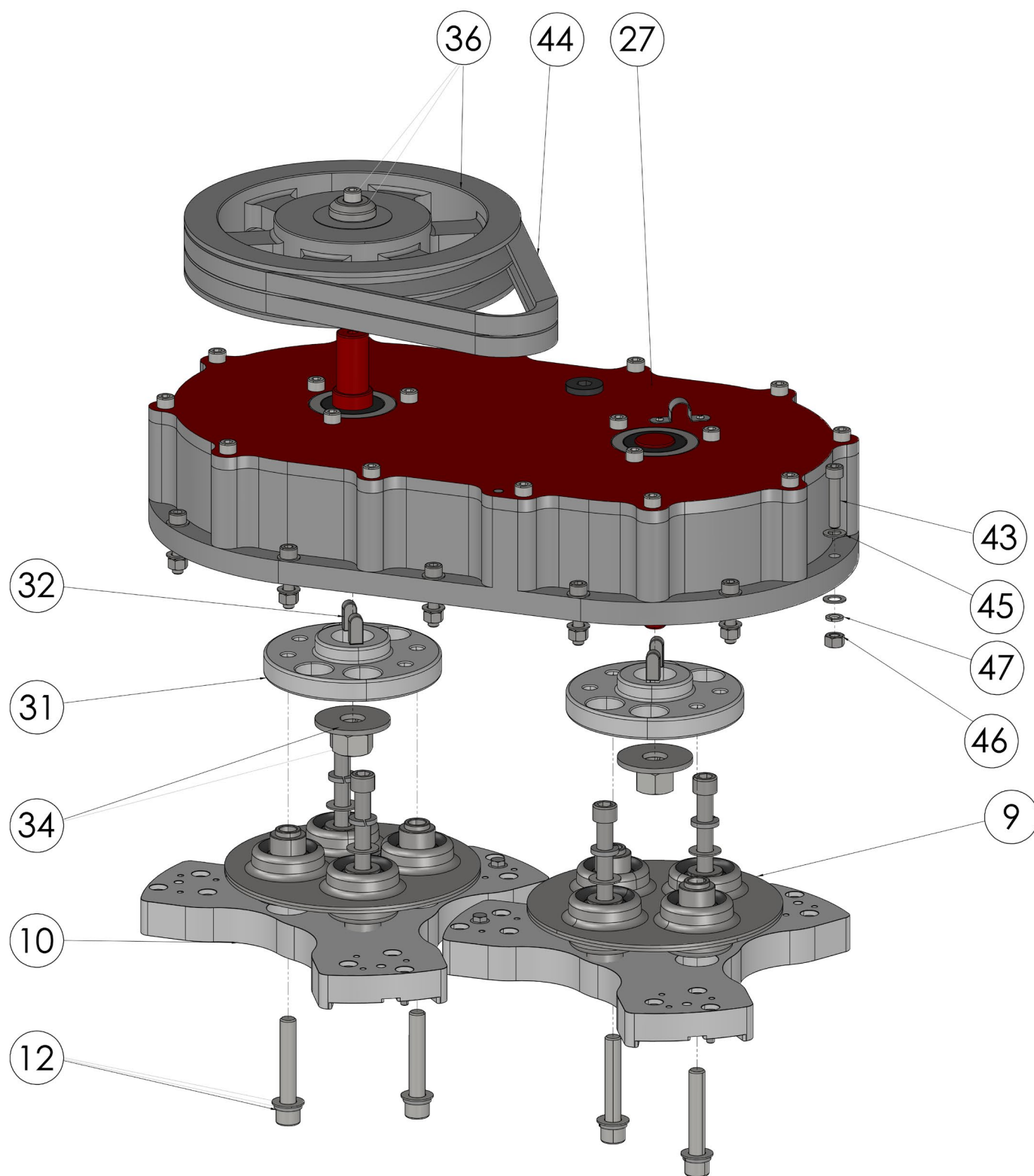
ITEM NO.	PART NUMBER	DESCRIPTION	QTY.
1	DP-DX22-WATK	DX22-E+ WATER TANK	1
2	DP-DX22-ECE0	DX22-E+ ELECTRIC MOTOR BOLTS M12X20	4
3	DP-DX22-RVBT	DX22-E+ RIBBED V-BELT	2
4	DP-DX22-ECER	DX22-E+ ELECTRIC MOTOR	1
6	DP-DX22-MBSH	DX22-E+ MOTOR BUSHING	1
7	DP-DX22-BTPY	DX22-E+ BELT PULLEY	1
8	DP-DX22-MRPG	DX22-E+ MOTOR PLUG	1
9	DP-DX22-MRFL	DX22-E+ MOTOR PLATE	1
10	DP-DX22-MSXB	DX22-E+ M8X20 HSB	8
11	DP-DX22-MT R	DX22-E+ M8 SPLIT WASHER	8
12	DP-DX22-M R	DX22-E+ M8 FLAT WASHER	8
13	DP-DX22-LEVB	DX22-E+ SIGHT LEVEL	1
14	DP-DX22-LTHD	DX22-E+ HAND WHEEL	1
15	DP-DX22-MSXB	DX22-E+ M5X20 HSB	2
16	DP-GH-DX0174	DX22-E+ LIFTING COLLAR	1
17	DP-GH-DX0170	DX22-E+ KICK STAND	1
18	DP-GH-DX0172	DX22-E+ GAS SPRING	1
19	DP-GH-DX0162	DX22-E+ KICK STAND SHAFT M12X90	1
20	DP-GH-DX0157	DX22-E+ CIRCLIP 12MM	2
21	DP-GH-DX0161	DX22-E+ UPPER GAS SPRING SHAFT M8X29	1
22	DP-GH-DX0159	DX22-E+ CIRCLIP 8MM	2
23	DP-GH-DX0160	DX22-E+ LOWER GAS SPRING SHAFT M8X80	1
24	DP-GH-DX0171	DX22-E+ LOWER SHAFT SPACER	2
25	DP-GH-DX0159	DX22-E+ CIRCLIP 8MM	2
26	DP-GH-DX0278	DX22-E+ M8X12MM HSB	2
27	DP-GH-DX0269	DX22-E+ M8 SPLIT WASHER	2
28	DP-GH-DX0270	DX22-E+ M8 FLAT WASHER	2
29	DP-GH-DX0173	DX22-E+ LIFTING SCREW	1
30	DP-GH-DX0175	DX22-E+ LINEAR BEARING	2

LOWER FRAME ASSEMBLY PARTS LIST
CONTINUED ON NEXT PAGE

LOWER FRAME ASSEMBLY

ITEM NO.	PART NUMBER	DESCRIPTION	QTY.
31	DP-GH-DX0264	DX22-E+ M10X100 TENSIONING BOLT	1
32	DP-DX22-GFEG	DX22-E+ GREASE FITTING	1
33	DP-GH-DX0169	DX22-E+ SLIDING SHAFT	2
34	DP-DX22-LVSL	DX22-E+ LEVELING SLEEVE	1
35	DP-DX22-CNNR	DX22-E+ CENTERING COLLAR	2
36	DP-DX-WCAP	DX22-E+ WALKING WHEEL CAP	2
37	DP-DX-WHEEL	DX22-E+ WALKING WHEEL	2
38	DP-DX22-AXLE	DX22-E+ WHEEL AXEL	1
39	DP-DX-FCL25	DX22-E+ FEMALE CAM	1
40	DP-DX-MCL25	DX22-E+ MALE CAM	1
41	DP-GH-DX0278	DX22-E+ M8x20 OHB	2
42	DP-GH-DX0269	DX22-E+ M8 SPLIT WASHER	2
43	DP-GH-DX0270	DX22-E+ M8 FLAT WASHER	2
44	DP-DX22-ODT	DX22-E+ OUTER DUST TUBING	1
45	DP-DX22-DSST	DX22-E+ DUST GASKET	3
46	DP-DX22-MDT	DX22-E+ MIDDLE DUST TUBING	1
47	DP-DX22-LDT	DX22-E+ LOWER DUST PORT	1
48	DP-GH-DX0131	DX22-E+ M8X25 HSB	2
49	DP-GH-DX0269	DX22-E+ M8 SPLIT WASHER	2
50	DP-GH-DX0270	DX22-E+ M8 FLAT WASHER	2
51	DP-DX22-DBBF	DX22-E+ FRONT DUST SHROUD TABS	2
52	DP-DX22-DBBR	DX22-E+ REAR DUST SHROUD TABS	2
53	DP-DX22-MTDC	DX22-E+ METAL DUST SHROUD	1

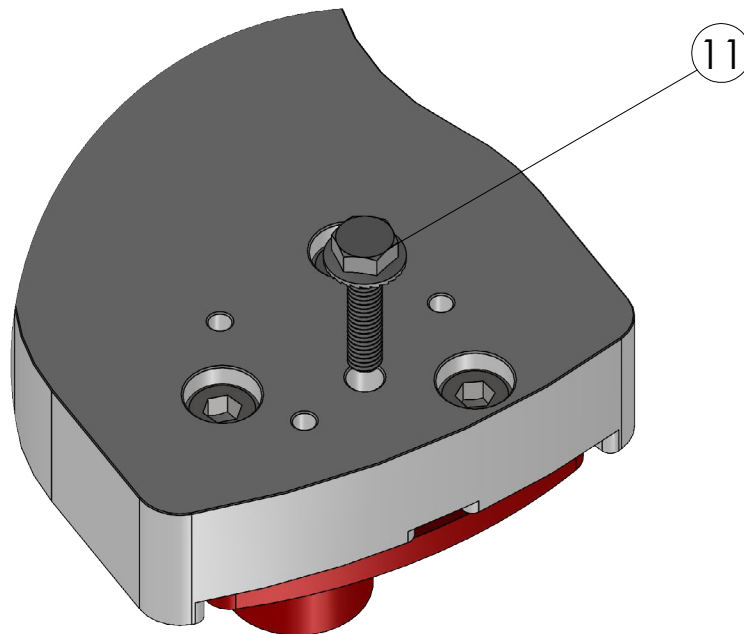
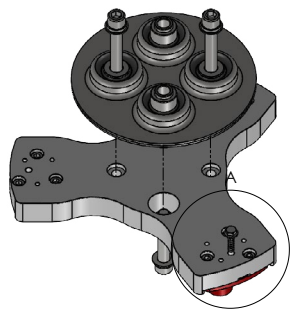
GEAR BOX



GEAR BOX

ITEM NO.	PART NUMBER	DESCRIPTION	QTY.
9	DP-GH-FLCO	FLEX COUPLER	2
10	DP-GH-GRPL	DX22 ALUMINUM TOOL PLATE	2
12	DP-DX-TPHW-KIT	TOOL PLATE HARDWARE KIT	1
27	DP-DX22-FGBA	FULL GEARBOX ASSEMBLY	1
31	DP-DX-GRCB	CLAW BASE	2
32	DP-KEY-10X8X22	CLAW BASE SHEAR KEY 10X8X22	4
34	DP-GH-DX0121-K	CLAW BASE HARDWARE KIT	1
36	DP-DX22-BTPY-250-K	LOWER BELT PULLEY KIT	1
43	DP-GH-DX0122	HEX SOCKET BOLT M8X40	12
44	DP-GH-BX34	COGGED V-BELT	2
45	DP-GH-DX0270	M8 WASHER	24
46	DP-GH-DX0124	M8 NUT	12
47	DP-GH-DX0269	M8 SPLIT WASHER	12

TOOL PLATE ASSEMBLY



ITEM NO.	PART NUMBER	DESCRIPTION	QTY.
11	DP-GH-RTSY	M6 HEX BEAD SERRATED BOLT	3

CONTROLS

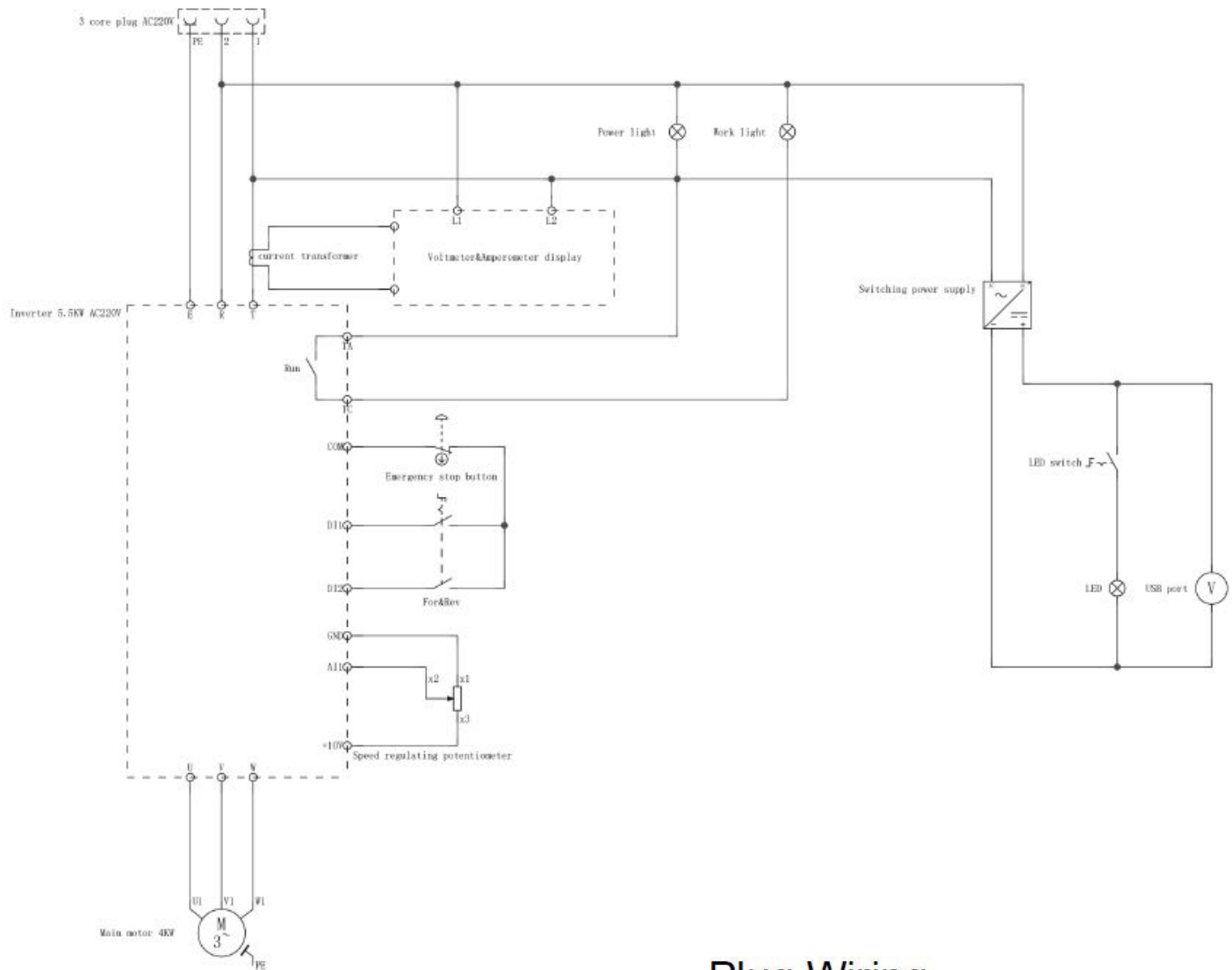


ITEM NO.	PART NUMBER	DESCRIPTION	QTY.
A	DP-DX22-VSCR	VOLTAGE/CURRENT SCREEN	1
B	DP-DX22-EMSW	EMERGENCY STOP SWITCH	1
C	DP-DX22-MFWR	MOTOR FWD/REVERSE	1
D	DP-DX22-GHSP	GRINDING HEAD SPEED	1
E	DP-DX22-LLED	LED LIGHT	1
F	DP-DX22-USB	USB PORT	1

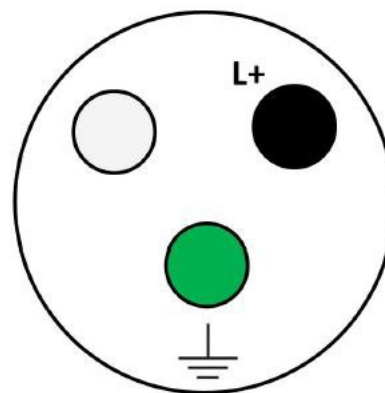
CONTROL PANEL OPERATION PROCESS

Connect the power > check whether (A) voltage/current is always on > turn clockwise to turn on (B) > knob (C) adjusts the forward and reverse direction of the grinding head > adjust the indicator of the (D) knob to control the speed of the grinding head

WIRING



Plug Wiring



L+ = Black = Hot

(Blank) = White = Neutral

 = Green = Ground

Customer Acknowledgment and Assumption of Responsibility for Modification to any Product.

Customer expressly acknowledges that modification of any equipment, machines, or other products purchased from Niagara Machine, Inc. ("Niagara"), including but not limited to DiamaPro Systems Products (collectively, "Products") through the attempted or actual use or misuse, adjustment, alteration, application of additional components, removal of provided components, repairs or attempted repairs by Customer (collectively, "Modifications") can lead to Product malfunction causing serious risks. Such risks include, but are not limited to, Product damage, bodily injury, death, or loss of or damage to property. Customer agrees that Customer is solely responsible for any Modifications Customer performs on any Product purchased from Niagara, and that Niagara is not responsible and will not be held liable for any claims, damages, or injury arising from Modifications by Customer, including Customer's employees, subcontractors, agents, representatives, affiliates, and assigns, to any Product purchased from Niagara. Customer further acknowledges and agrees that any Modification(s) to a Product may, at DiamaPro Systems' and/or Niagara's election, void any warranty applicable to the Product.

Customer agrees that, to the greatest extent permitted by law, Customer shall indemnify, hold harmless and, at Niagara's request, defend (with counsel reasonably approved by Niagara), Niagara, Niagara's parent, subsidiaries, affiliates and the officers, directors, employees and agents of Niagara (individually and collectively "Niagara Indemnitees") from and against, and pay or reimburse them for any and all third-party claims, losses, damages, liabilities, lawsuits and expenses (including reasonable attorneys' fees) relating to bodily injury, death, or loss of or damage to property caused by or arising from any Modification to a Product by Customer, its employees, subcontractors, agents, representatives, affiliates, and assigns (individually and collectively, "Customer Group"), with respect to the Products Customer purchases from Niagara.

Customer acknowledges that Customer has read and understands these terms, and voluntarily assumes full and sole responsibility for any and all effects arising from any Modification to a Product by Customer Group.



DiamaPro® Systems
3343 Peachtree Road NE
Suite 145 #24
Atlanta, GA 30326
470-977-2323