

# DP-ROG-60 DRY STEPS

## REMOVAL AND PREP



**2**  
IF POLISHING  
MOVE TO STEP 2  
BELOW



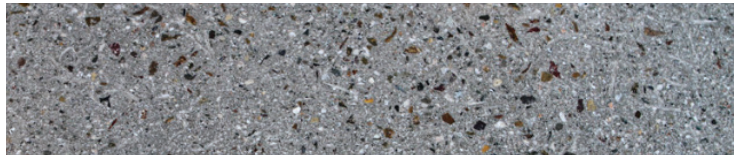
## LARGE AGGREGATE



**3**  
IF POLISHING  
MOVE TO STEP 2  
BELOW



## STANDARD SALT AND PEPPER POLISHING STEPS



\*IF A HIGHER LEVEL OF POLISH IS DESIRED - 1500 & 3000 PPUCKS WOULD BE USED AFTER STEP 7

# DP-ROG-60 WET STEPS

## REMOVAL AND PREP



**1**



30/40 GRIT  
STARS -WET

**2**  
IF POLISHING  
MOVE TO STEP 2  
BELOW



## LARGE AGGREGATE



**1**



30/40 GRIT 7 SEG  
W/DIAMACUT -WET

**2**



60/80 GRIT 7 SEG  
W/DIAMACUT -WET

**3**  
IF POLISHING  
MOVE TO STEP 2  
BELOW



## STANDARD SALT AND PEPPER POLISHING STEPS



**1**



30 GRIT P-PUCK SHB  
W/DIAMACUT -WET

**2**



50 GRIT P-PUCK SHB  
W/DIAMACUT -WET

**3**



100 GRIT P-PUCK SHB  
W/DIAMACUT -WET

**4**



200 GRIT P-PUCK SHB WET  
DT-PPUCK3-RES-200

**5**



400 GRIT P-PUCK  
DRY- STOP FOR  
MATTE FINISH

**6**




800 GRIT P-PUCK  
(DRY ONLY)

**7**



APPLY DIAMAGUARD

**8**



BURNISH  
27" EZ FINISH PAD  
ON HIGH SPEED  
BURNISHER

\*IF A HIGHER LEVEL OF POLISH IS DESIRED - 1500 & 3000 PPUCKS WOULD BE USED AFTER STEP 6