

CONCRETE GRINDERS

DP-DX26-P



BEST IN CLASS DURABILITY AND PERFORMANCE

In the concrete and terrazzo flooring industry, efficiency, durability, and precision play key roles in the selection of equipment that can significantly impact your project's outcome and profitability. DiamoPro Systems understands these demands. The DX26-P 26-inch propane powered rotary concrete floor grinder is a game-changer for the contractor.

DURABILITY AND POWER FOR DEMANDING PROJECTS

Built to withstand the rigors of the construction site, the DX26-P boasts a heavy-duty design that guarantees longevity and consistent performance. Equipped with a robust gearbox, it delivers the high torque necessary for effectively tackling even the most challenging surfaces. Whether it's concrete, terrazzo, or natural stone, the DX26-P is your reliable partner for prep, polish, and removal tasks.

DESIGN FEATURES

- Robust Gearbox
- Adjustable Weight System
- Foldable Handle
- LED Lighting
- Transportation Wheel
- EPA & CARB Certified Propane Engine
- Emissions Monitoring Unit
- Magnetic Plates

SPECIFICATIONS

ENGINE	27HP Kawasaki 852cc
FUEL	Propane
WEIGHT	1100 LBS
HEADS	4x12"
GRINDING	26" Width
SPEED	1440RPM
PRESSURE	600-720 LBS
TYPE	Rotary Grinder

[CLICK TO SEE IN ACTION](#)

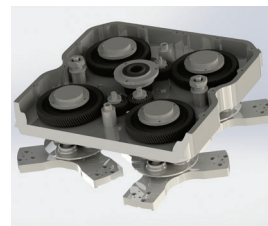
[CLICK TO VIEW FEATURES](#)



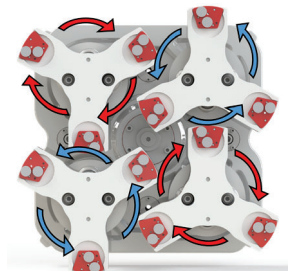
Large foldable handle for easy operation and compact storage



Centralized control unit with carbon monoxide monitor



Robust gears to drive tool plates



Counter rotating heads make it easy for the operator to use

COMES WITH:

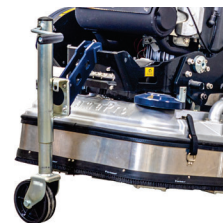
[PACKAGE AVAILABLE](#)



20 LB Propane Tank



12 Velcro Holders



Third wheel for easy job site movement